



## 4330 San Michelle Court Kelowna British Columbia

\$1,149,900

Lower Mission location. Detached family home, fully renovated on a large corner lot. Walk to schools. Suite. Garage. Pool sized yard. All the boxes checked? This is the one you have been looking for. The list of all the updates is extensive but some highlights are - all exterior windows, roof, legal suite, honeycomb blinds, HVAC, Upper kitchen with maple cabinets and quartz countertops, electrical service & gas f/p. The 0.25 corner acre lot is level and has the potential for a fantastic pool and entertainment area or detached garage/workshop. (id:6769)

Storage 6' x 8'

Storage 9' x 6'9"

Recreation room 12'6" x 19'6"

Laundry room 10' x 10'8"

Kitchen 8'1" x 7'10"

Bedroom 12'7" x 10'11"

Bedroom 12'7" x 10'6"

4pc Bathroom 9'1" x 7'2"

Other 27'5" x 12'7"

Living room 17'2" x 20'4"

Kitchen 10'3" x 11'10"

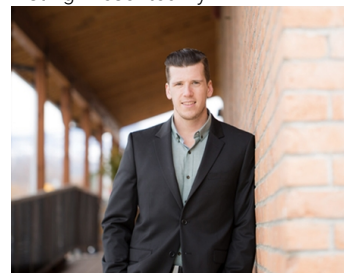
Dining room 10'8" x 7'7"

Bedroom 10'1" x 11'8"

Primary Bedroom 12'3" x 11'6"

4pc Bathroom 9'10" x 7'5"

Listing Presented By:



Originally Listed by:  
Stilhavn Real Estate Services

<http://www.getbrett.ca/>

**RE/MAX**Kelowna

**RE/MAX Kelowna**

100-1553 Harvey Avenue ,  
Kelowna, BC, V1Y 6G1

Phone: 250-870-6145  
[dallas@remaxkelowna.com](mailto:dallas@remaxkelowna.com)

The property information on this website is derived from the Canadian Real Estate Association's Data Distribution Facility (DDF®). DDF® references real estate listings held by various brokerage firms and franchisees. The accuracy of information is not guaranteed and should be independently verified. The trademarks REALTOR®, REALTORS® and the REALTOR® logo are controlled by The Canadian Real Estate Association (CREA) and identify real estate professionals who are members of CREA. The trademarks MLS®, Multiple Listing Service® and the associated logos are owned by CREA and identify the quality of services provided by real estate professionals who are members of CREA.