

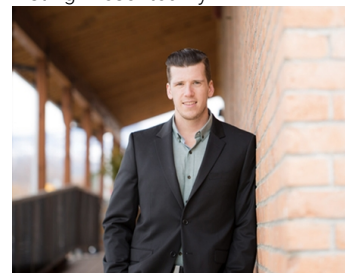


440 Audubon Court Kelowna British Columbia

\$1,749,000

Set in one of Kettle Valley's most established, family-friendly neighbourhoods, this modern residence offers over 4,000 sq. ft. of well-designed living space with exceptional value for growing families. Just minutes to schools, parks, and neighbourhood amenities, the location balances daily convenience with an active lifestyle. Thoughtfully planned across three levels, the home features five bedrooms, four bathrooms, and a dedicated den. Vaulted ceilings, expansive windows, and a floor-to-ceiling fireplace define the main living area, while the granite kitchen is equipped with Fisher & Paykel and Miele appliances, a gas range, convection oven, integrated coffee system, and Bosch dishwasher. The dining area opens to a covered patio with gas hookup, outdoor speakers, and open views—ideal for everyday living and entertaining. The primary suite is located on the main floor with heated ensuite flooring. Hardwood floors, built-in speakers, heated tile in the entry, and accent-lit stairs reflect the quality carried throughout. Upstairs offers two additional bedrooms, while the lower level includes two more bedrooms, a theatre room with tiered seating, wet bar, recreation space, and walk-out access to the yard. A bathroom with exterior access adds poolside convenience. Outdoors, mature hedging frames a private, resort-style setting with a swimming pool, stone water feature, hot tub, and multiple lounging areas—an ideal family home with room to grow in the heart of Kettle Valley. (id:6769)

Listing Presented By:



Originally Listed by:
RE/MAX Kelowna - Stone Sisters

RE/MAX Kelowna

RE/MAX Kelowna

100-1553 Harvey Avenue ,
Kelowna, BC, V1Y 6G1

Phone: 250-870-6145
dallas@remaxkelowna.com

Loft 14'10" x 12'0"

Bedroom 15'8" x 12'0"

Bedroom 15'10" x 12'0"

Full bathroom 11'6" x 10'0"

Full bathroom 10'4" x 11'5"

Family room 30'9" x 12'10"

Recreation room 15'9" x 12'0"

Bedroom 13'0" x 13'11"

Media room 12'0" x 12'0"

Bedroom 14'9" x 14'0"

Den 11'8" x 10'11"

Partial bathroom 8'2" x 4'10"

Full ensuite bathroom 14'0" x 10'3"

Primary Bedroom 14'11" x 14'0"

Laundry room 12'4" x 9'0"

Living room 14'4" x 13'8"

Dining room 15'10" x 12'0"

Kitchen 10'8" x 12'8"

The property information on this website is derived from the Canadian Real Estate Association's Data Distribution Facility (DDF®). DDF® references real estate listings held by various brokerage firms and franchisees. The accuracy of information is not guaranteed and should be independently verified. The trademarks REALTOR®, REALTORS® and the REALTOR logo are controlled by The Canadian Real Estate Association (CREA) and identify real estate professionals who are members of CREA. The trademarks MLS®, Multiple Listing Service® and the associated logos are owned by CREA and identify the quality of services provided by real estate professionals who are members of CREA.