



440 Audubon Court Kelowna British Columbia

\$1,739,000

Located in an exclusive, mature enclave of Kettle Valley this high end home offers over 4,000 sq.ft. of luxury living. Close to schools, transit and parks, this is Kelowna living at it's finest. Features include: vaulted ceilings with an open air landing, 5 bedrooms, 4 bathrooms. Huge fireplace stretches floor to ceiling - walk out to your private pool. Top of the line appliances, radiant in-floor heating, outdoor speakers, home theatre, wet bar, hot tub. Pool has been well-planned with outdoor kitchen area, hot tub, stone water feature, mature landscaping for privacy, exterior access bathroom with shower. Plenty of parking - 3 car garage. (id:6769)

Loft 14'10" x 12'0"

Bedroom 15'8" x 12'0"

Bedroom 15'10" x 12'0"

Full bathroom 11'6" x 10'0"

Full bathroom 10'4" x 11'5"

Family room 30'9" x 12'10"

Recreation room 15'9" x 12'0"

Bedroom 13'0" x 13'11"

Media 19'8" x 12'0"

Bedroom 14'9" x 14'0"

Den 11'8" x 10'11"

Partial bathroom 8'2" x 4'10"

Full ensuite bathroom 14'0" x 10'3"

Primary Bedroom 14'11" x 14'0"

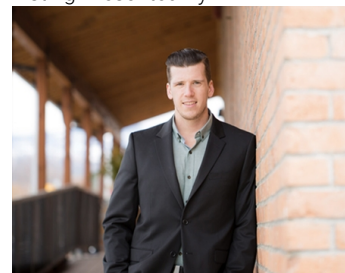
Laundry room 12'4" x 9'0"

Living room 14'4" x 13'8"

Dining room 15'10" x 12'0"

Kitchen 15'8" x 12'8"

Listing Presented By:



Originally Listed by:
Century 21 Assurance Realty Ltd

<https://julie-gillespie.c21.ca/>

RE/MAX Kelowna

RE/MAX Kelowna

100-1553 Harvey Avenue ,
Kelowna, BC, V1Y 6G1

Phone: 250-870-6145
dallas@remaxkelowna.com

The property information on this website is derived from the Canadian Real Estate Association's Data Distribution Facility (DDF®). DDF® references real estate listings held by various brokerage firms and franchisees. The accuracy of information is not guaranteed and should be independently verified. The trademarks REALTOR®, REALTORS® and the REALTOR® logo are controlled by The Canadian Real Estate Association (CREA) and identify real estate professionals who are members of CREA. The trademarks MLS®, Multiple Listing Service® and the associated logos are owned by CREA and identify the quality of services provided by real estate professionals who are members of CREA.