



13098 SHORELINE WAY Other 47 Lake Country British Columbia

\$749,000

Located in an excellent location in a new community with 4 beds and 3.5 baths. Open concept and modern with quartz countertops, gas stove & stainless steel appliances. Primary bed has lots of closet space & ensuite. Good sized fenced yard for the kids & pets & a lovely garden. End unit & offset yielding privacy & natural light Double car garage. APEX at the Lakes is conveniently located near hiking trails, wineries, golf courses, parks, and lakes. It is also adjacent to Shoreline Park with its full size basketball court and play area making it essentially your back yard. (Including furniture) (id:6769)

Bedroom 10'10" x 8'7"

Bedroom 8'7" x 12'8"

Primary Bedroom 12'8" x 11'7"

5pc Ensuite bath Measurements not available

4pc Bathroom Measurements not available

Bedroom 10' x 10'

3pc Bathroom Measurements not available

2pc Bathroom Measurements not available

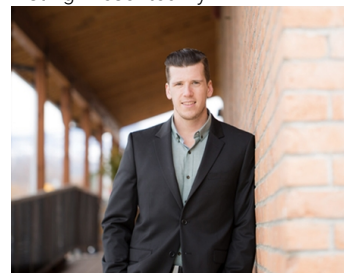
Kitchen 13'8" x 8'4"

Living room 15'10" x 12'5"

Family room 13'4" x 8'4"

Dining room 11'5" x 10'

Listing Presented By:



Originally Listed by:
RE/MAX Wine Capital Realty

RE/MAXKelowna

RE/MAX Kelowna

100-1553 Harvey Avenue ,
Kelowna, BC, V1Y 6G1

Phone: 250-870-6145
dallas@remaxkelowna.com

The property information on this website is derived from the Canadian Real Estate Association's Data Distribution Facility (DDF®). DDF® references real estate listings held by various brokerage firms and franchisees. The accuracy of information is not guaranteed and should be independently verified. The trademarks REALTOR®, REALTORS® and the REALTOR® logo are controlled by The Canadian Real Estate Association (CREA) and identify real estate professionals who are members of CREA. The trademarks MLS®, Multiple Listing Service® and the associated logos are owned by CREA and identify the quality of services provided by real estate professionals who are members of CREA.