



470 Vista Road Kelowna British Columbia

\$910,000

A hidden gem on a quiet street in central Rutland with no immediate backyard neighbors. This five-bedroom home features a primary bedroom with an ensuite, plus two additional bathrooms. The fully fenced yard and massive deck with a built-in pool make it perfect for entertaining and soaking up the sun. Mature cherry and peach trees produce fruit in the summer, complemented by a beautiful Japanese maple and other mature trees throughout the property. The oversized double garage offers built-in workshop space and shelving, plus lots of parking - including room for an RV. Steps from Ben Lee Park with its waterpark, walking track, horseshoes, and skateboard park. Located in a great school catchment: Belgo Elementary, Springvalley, and Rutland High. Just 10 minutes to the airport or downtown. With UC4 zoning, this is an excellent investment property and ideal for families, remote workers, first-time or last-time buyers, and investors. (id:6769)

Foyer 8' x 6'1"

3pc Bathroom 8'1" x 5'8"

Bedroom 11'2" x 12'1"

4pc Bathroom 7'9" x 8'8"

Bedroom 15'10" x 12'2"

Bedroom 8'6" x 9'1"

Bedroom 12'0" x 9'

2pc Ensuite bath 4'6" x 5'8"

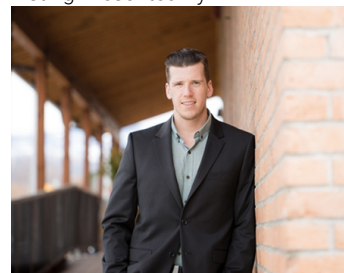
Primary Bedroom 13' x 13'

Dining room 13'4" x 11'

Kitchen 13'4" x 12'8"

Living room 12'0" x 14'1"

Listing Presented By:



Originally Listed by:
Royal LePage Kelowna

RE/MAX Kelowna

RE/MAX Kelowna

100-1553 Harvey Avenue ,
Kelowna, BC, V1Y 6G1

Phone: 250-870-6145
dallas@remaxkelowna.com

The property information on this website is derived from the Canadian Real Estate Association's Data Distribution Facility (DDF®). DDF® references real estate listings held by various brokerage firms and franchisees. The accuracy of information is not guaranteed and should be independently verified. The trademarks REALTOR®, REALTORS® and the REALTOR® logo are controlled by The Canadian Real Estate Association (CREA) and identify real estate professionals who are members of CREA. The trademarks MLS®, Multiple Listing Service® and the associated logos are owned by CREA and identify the quality of services provided by real estate professionals who are members of CREA.