

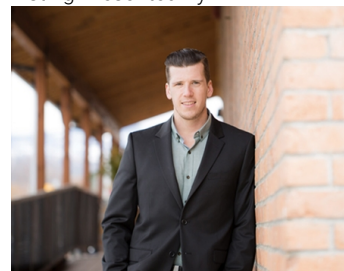


## 510 / 520 Beaver Lake Road Kelowna British Columbia

\$1,125,000

Industrial Zoned (I-3) Property consists of a 1952 built (approx) 2 storey updated Residence with a Vacant Lot. This area is in a transition area to Industrial / Commercial. Located near major transportation routes, including highways and airport which makes it easier to transport goods and materials. Ideal Business location, with many possibilities or Home Business. Property borders the municipality of Lake Country a growing community, and the demand for Industrial space is increasing. Combine it with Property next door 530 Beaver Lake Rd for .50 acre lot. Subject Property is 120 feet frontage by 100 fet deep (.28 acres). On Municipal Water plus a Well on the Vacant Lot.\_ (id:6769)

Listing Presented By:



Originally Listed by:  
RE/MAX Kelowna

<http://www.access-kelowna.com/>

**RE/MAX Kelowna**

**RE/MAX Kelowna**

100-1553 Harvey Avenue ,  
Kelowna, BC, V1Y 6G1

Phone: 250-870-6145  
[dallas@remaxkelowna.com](mailto:dallas@remaxkelowna.com)

The property information on this website is derived from the Canadian Real Estate Association's Data Distribution Facility (DDF®). DDF® references real estate listings held by various brokerage firms and franchisees. The accuracy of information is not guaranteed and should be independently verified. The trademarks REALTOR®, REALTORS® and the REALTOR® logo are controlled by The Canadian Real Estate Association (CREA) and identify real estate professionals who are members of CREA. The trademarks MLS®, Multiple Listing Service® and the associated logos are owned by CREA and identify the quality of services provided by real estate professionals who are members of CREA.