

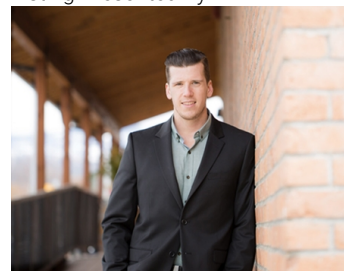


5601 Twin Creek Place Kelowna British Columbia

\$990,000

Discover the perfect canvas for your dream lifestyle on this serene 9.8-acre lot, nestled in the lower part of Ellison Estates. With breathtaking views of surrounding forests, orchards, and the valley below, this blank slate of land is ready for your vision... bring your plans! Multiple build sites with views of the majestic Okanagan Valley. Zoned for a wide variety of principal uses including single-family or mobile homes, agriculture, aquaculture, forestry, cannabis cultivation, animal clinics, greenhouses and plant nurseries, kennels, or stables, it also allows for secondary uses such as secondary suites, carriage homes, B&Bs, alcohol production, agri-tourism, or home-based businesses, like minor child care, or farm retail sales stands (with restrictions). A paved road leads right to the lot, and a well is already in place for added convenience. Families will appreciate being within the excellent catchment of Ellison Elementary School, and bring right up the road from Sunset Ranch Golf Course. Outdoor enthusiasts will love the proximity to the hills, and recreation spots like Ellison Dog Park, High Noon Park, and Shadow Ridge Golf Club. Don't miss this unique opportunity to create something truly special in a peaceful, versatile, and scenic setting. (id:6769)

Listing Presented By:



Originally Listed by:
Oakwyn Realty Ltd.

RE/MAX Kelowna

RE/MAX Kelowna

100-1553 Harvey Avenue ,
Kelowna, BC, V1Y 6G1

Phone: 250-870-6145
dallas@remaxkelowna.com

The property information on this website is derived from the Canadian Real Estate Association's Data Distribution Facility (DDF®). DDF® references real estate listings held by various brokerage firms and franchisees. The accuracy of information is not guaranteed and should be independently verified. The trademarks REALTOR®, REALTORS® and the REALTOR® logo are controlled by The Canadian Real Estate Association (CREA) and identify real estate professionals who are members of CREA. The trademarks MLS®, Multiple Listing Service® and the associated logos are owned by CREA and identify the quality of services provided by real estate professionals who are members of CREA.