

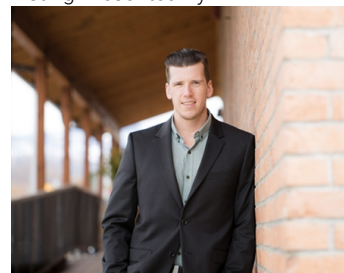


## 5669 MOUNTAINSIDE Drive Kelowna British Columbia

\$549,000

Lake view 0.35 acre lot with permit ready architectural and structural engineering drawings included. Save time and cost with a house design completed by Trickle Creek Custom Homes and plans fully approved by Kettle Valley Development. Site is ready to build a personal residence or an investment property, lower-level suite option included in the design. This lot is located in one of the most sought-after neighbourhoods with the space for a large yard or pool. Nestled in a prime location, this parcel of land offers views of the surrounding mountains, lake & mature landscapes, providing an enchanting backdrop for an executive, luxury home. A nature corridor to the left of the lot provides additional privacy. With its gently sloping terrain & generous dimensions, this lot presents limitless opportunities for creating a custom-designed residence. Imagine waking up to panoramic sunrises and unwinding with captivating sunsets from the comfort of your own private oasis. Architectural renderings included in the photos offer insight into the potential of this remarkable property and showcases how you can maximize its natural beauty. Upper Mission residents enjoy easy access to premier amenities, including top-rated schools, scenic hiking trails, award winning wineries, and world-class golf courses. Don't miss your chance to secure this rare gem in the Upper Mission and turn your vision of luxury living into a reality in the Okanagan Valley. (id:6769)

Listing Presented By:



Originally Listed by:  
RE/MAX Kelowna - Stone Sisters

**RE/MAX Kelowna**

**RE/MAX Kelowna**

100-1553 Harvey Avenue ,  
Kelowna, BC, V1Y 6G1

Phone: 250-870-6145  
dallas@remaxkelowna.com