

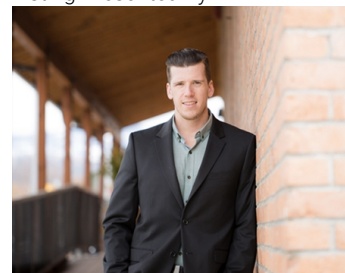


## 2271 Harvey Avenue 570 Kelowna British Columbia

\$64,900

Pleased to offer Sheffield Express Kelowna, a offers solid business opportunity for anyone looking for an easy-to-run business with a gauranteed income. This franchise convenience store is located in the center Orchard Park Shopping Center, the largest shopping mall in the Okanagan. A great opportunity for those who are looking for a perfect blend of stable income with work-life balance. The business follows the mall hours of approx. 60 hours a day. Only 1.5 full time hours required. Perfect business for a single owner or a couple. Managable work load offers great opportunity for semi-retired couples as well. Items include; Lottery, Tabbaco, Slushy, Vapes etc. The seller has recently updated the leasehold improvement. Franchise Approval required but should be easy. Inventory is extra and is estimated to be around \$60k~70k. The seller will offer proper training. Secure lease until 2030. Contact for more information. (id:6769)

Listing Presented By:



Originally Listed by:  
Royal LePage Kelowna

<http://www.jimmy.royallepage.ca/>

**RE/MAX Kelowna**

**RE/MAX Kelowna**

100-1553 Harvey Avenue ,  
Kelowna, BC, V1Y 6G1

Phone: 250-870-6145  
[dallas@remaxkelowna.com](mailto:dallas@remaxkelowna.com)

The property information on this website is derived from the Canadian Real Estate Association's Data Distribution Facility (DDF®). DDF® references real estate listings held by various brokerage firms and franchisees. The accuracy of information is not guaranteed and should be independently verified. The trademarks REALTOR®, REALTORS® and the REALTOR® logo are controlled by The Canadian Real Estate Association (CREA) and identify real estate professionals who are members of CREA. The trademarks MLS®, Multiple Listing Service® and the associated logos are owned by CREA and identify the quality of services provided by real estate professionals who are members of CREA.