

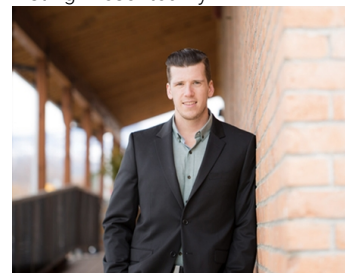


## 58 Homer Crescent Vernon British Columbia

\$99,900

This sloped 0.50 acre lot is available immediately in the Killiney Beach area. The Killiney Beach area is located roughly 35 mins outside of Vernon on the Westside of Okanagan Lake. If you are looking for a lot to build an amazing home and commune with nature, this is it. This Killiney Beach subdivision offers so much, there is a community beach complete with picnic tables, a boat launch, washrooms, a dog beach. There is also a community hall which the residents may use for family gatherings. This community hall also houses the Fire Department. This is a sloped lot and could offer options for building. Fintry Provincial Park is approximately 10 mins away and offers camping, swimming, kayaking, canoeing, hiking activities. Measurements and property lines are approximate and should not be relied upon without verification (id:6769)

Listing Presented By:



Originally Listed by:  
Royal LePage Downtown Realty

<http://www.johnchristmaseveryday.com/>

**RE/MAX Kelowna**

**RE/MAX Kelowna**

100-1553 Harvey Avenue ,  
Kelowna, BC, V1Y 6G1

Phone: 250-870-6145  
[dallas@remaxkelowna.com](mailto:dallas@remaxkelowna.com)

The property information on this website is derived from the Canadian Real Estate Association's Data Distribution Facility (DDF®). DDF® references real estate listings held by various brokerage firms and franchisees. The accuracy of information is not guaranteed and should be independently verified. The trademarks REALTOR®, REALTORS® and the REALTOR® logo are controlled by The Canadian Real Estate Association (CREA) and identify real estate professionals who are members of CREA. The trademarks MLS®, Multiple Listing Service® and the associated logos are owned by CREA and identify the quality of services provided by real estate professionals who are members of CREA.