

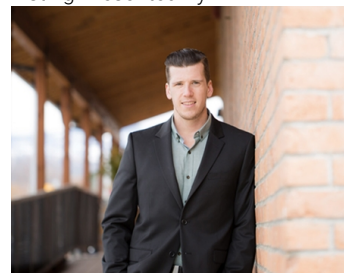


3001 43 Avenue 6 Vernon British Columbia

\$12

Opportunity to lease 2365 SF warehouse with 2 piece bathroom and 10 x 10 bay door, 10 feet ceiling situated in a high traffic area and easy access to the highway. Next door to Napa Auto Parts. (id:6769)

Listing Presented By:



Originally Listed by:
RealtyMonX

RE/MAXKelowna

RE/MAX Kelowna

100-1553 Harvey Avenue ,
Kelowna, BC, V1Y 6G1

Phone: 250-870-6145
dallas@remaxkelowna.com

The property information on this website is derived from the Canadian Real Estate Association's Data Distribution Facility (DDF®). DDF® references real estate listings held by various brokerage firms and franchisees. The accuracy of information is not guaranteed and should be independently verified. The trademarks REALTOR®, REALTORS® and the REALTOR® logo are controlled by The Canadian Real Estate Association (CREA) and identify real estate professionals who are members of CREA. The trademarks MLS®, Multiple Listing Service® and the associated logos are owned by CREA and identify the quality of services provided by real estate professionals who are members of CREA.