

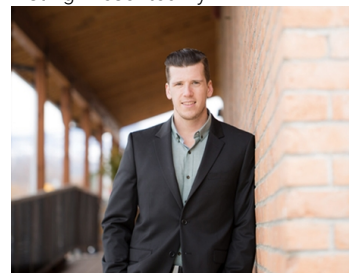


799 Sutherland Avenue Kelowna British Columbia

\$949,000

INVESTOR ALERT! SEIZE YOUR OPPORTUNITY TO PURCHASE THE LOWEST PRICED 0.18 ACRE (56'x138') MF1 ZONED LOT IN SOUTH KELOWNA! 799 Sutherland Avenue is currently located within the designated Core Neighbourhood (C-NHD) designation of Kelowna's 2040 Official Community Plan (OCP) plan and there's an abundance of street parking and alley access to our site. The city supports infill development of 6 ground-oriented residential dwelling units or less and there may be opportunity to land assemble with a neighbour. St. Joseph private school is located on the same block as us, and the beach, KGH hospital, multiple grocery stores, boutiques, several parks, and restaurants are all within a short walk. This is a prime location that's culturally rich, on the transit route and already flourishing with new development. Don't miss this rare opportunity to build in one of Kelowna's most thriving neighbourhoods! (id:6769)

Listing Presented By:



Originally Listed by:
RE/MAX Kelowna

<http://www.goldilocksestates.com/>

RE/MAX Kelowna

RE/MAX Kelowna

100-1553 Harvey Avenue ,
Kelowna, BC, V1Y 6G1

Phone: 250-870-6145
dallas@remaxkelowna.com

The property information on this website is derived from the Canadian Real Estate Association's Data Distribution Facility (DDF®). DDF® references real estate listings held by various brokerage firms and franchisees. The accuracy of information is not guaranteed and should be independently verified. The trademarks REALTOR®, REALTORS® and the REALTOR® logo are controlled by The Canadian Real Estate Association (CREA) and identify real estate professionals who are members of CREA. The trademarks MLS®, Multiple Listing Service® and the associated logos are owned by CREA and identify the quality of services provided by real estate professionals who are members of CREA.