

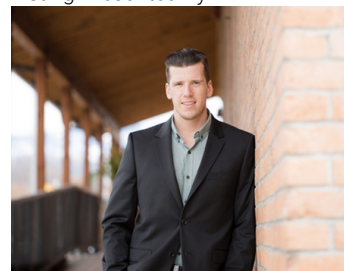


898 Lloyd Jones Drive West Kelowna British Columbia

\$550,000

Looking for a lot to build your next home with lake views? Look no further, this .47 acre lot located in the gated Shaleridge Place community boasts immaculate views of the Okanagan Lake & Valley. Perched on the hillside and located in a quiet neighbourhood, this vacant lot is also near Rose Valley Elementary, Okanagan Lake & Highway 97 for all shopping, restaurants, essentials, Kelowna's downtown core & more! (id:6769)

Listing Presented By:



Originally Listed by:
Royal LePage Kelowna

<http://tjsteph.com/>

RE/MAX Kelowna

RE/MAX Kelowna

100-1553 Harvey Avenue ,
Kelowna, BC, V1Y 6G1

Phone: 250-870-6145
dallas@remaxkelowna.com

The property information on this website is derived from the Canadian Real Estate Association's Data Distribution Facility (DDF®). DDF® references real estate listings held by various brokerage firms and franchisees. The accuracy of information is not guaranteed and should be independently verified. The trademarks REALTOR®, REALTORS® and the REALTOR® logo are controlled by The Canadian Real Estate Association (CREA) and identify real estate professionals who are members of CREA. The trademarks MLS®, Multiple Listing Service® and the associated logos are owned by CREA and identify the quality of services provided by real estate professionals who are members of CREA.