



1947 Underhill Street 901 Kelowna British Columbia

\$635,000

Welcome to this most sought after location. Prestigious Park Place Tower. Enjoy the 9th floor views from this North East facing unit overlooking the outdoor pool and tennis court. Unparalleled views of Downtown Kelowna to Dilworth Mountain and out towards Ellison with magnificent evening lighting of the city. Many amenities are included besides the pool and tennis court with fitness room. guest suite, a full cinema room with surround sound and 2 amenity rooms. . Walking distance to all shopping and amenities. Featuring , 2 Bedrooms, 2 bathrooms and den in this 1341 sq ft unit. Gas Fireplace (which the gas is included in your strata fees), 6 appliances and a deluxe walk in Jacuzzi tub in the master ensuite. There is a natural gas hook up on the patio for your BBQ. Call to make an appointment to view. (id:6769)

Laundry room 6'3" x 5'5"

Den 10'5" x 8'

Full bathroom Measurements not available

Bedroom 11'10" x 10'1"

Full ensuite bathroom Measurements not available

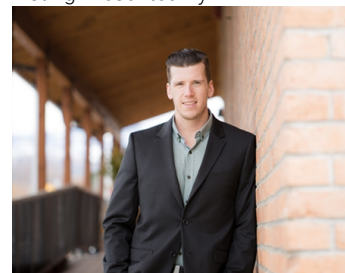
Primary Bedroom 11'3" x 19'9"

Living room 12'9" x 12'4"

Dining room 18'3" x 16'5"

Kitchen 14'9" x 13'6"

Listing Presented By:



Originally Listed by:
Coldwell Banker Horizon Realty

RE/MAX Kelowna

RE/MAX Kelowna

100-1553 Harvey Avenue ,
Kelowna, BC, V1Y 6G1

Phone: 250-870-6145
dallas@remaxkelowna.com

The property information on this website is derived from the Canadian Real Estate Association's Data Distribution Facility (DDF®). DDF® references real estate listings held by various brokerage firms and franchisees. The accuracy of information is not guaranteed and should be independently verified. The trademarks REALTOR®, REALTORS® and the REALTOR® logo are controlled by The Canadian Real Estate Association (CREA) and identify real estate professionals who are members of CREA. The trademarks MLS®, Multiple Listing Service® and the associated logos are owned by CREA and identify the quality of services provided by real estate professionals who are members of CREA.