



935 Sutcliffe Court Kelowna British Columbia

\$1,189,000

Sprawling executive home! 1 level living plus 2 additional bedrooms on second level; 2 ½ baths; well-organized thought-out plan with master bedroom on main with second bedroom or den; formal living and dining room; large kitchen; adjacent oversized family room; beautifully landscaped private lot; oversized attached garage; plus large detached workshop garage; huge amount of RV parking; room for all your vehicles and toys; area of fine homes all located on a quiet no thru street. (id:6769)

Partial bathroom Measurements not available

Bedroom 14'2" x 8'6"

Bedroom 16' x 12'9"

Laundry room 13' x 6'

3pc Ensuite bath Measurements not available

Full bathroom Measurements not available

Bedroom 12'11" x 11'4"

Primary Bedroom 16'9" x 13'2"

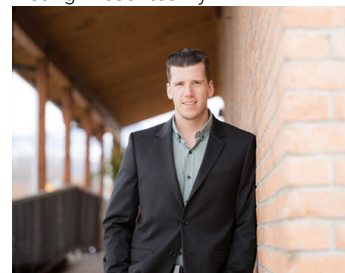
Family room 18'7" x 12'1"

Kitchen 17'5" x 12'10"

Dining room 13'2" x 12'

Living room 17'6" x 13'4"

Listing Presented By:



Originally Listed by:
Royal LePage Kelowna

<http://www.markjontz.com/>

RE/MAX Kelowna

RE/MAX Kelowna

100-1553 Harvey Avenue,
Kelowna, BC, V1Y 6G1

Phone: 250-870-6145
dallas@remaxkelowna.com

The property information on this website is derived from the Canadian Real Estate Association's Data Distribution Facility (DDF®). DDF® references real estate listings held by various brokerage firms and franchisees. The accuracy of information is not guaranteed and should be independently verified. The trademarks REALTOR®, REALTORS® and the REALTOR® logo are controlled by The Canadian Real Estate Association (CREA) and identify real estate professionals who are members of CREA. The trademarks MLS®, Multiple Listing Service® and the associated logos are owned by CREA and identify the quality of services provided by real estate professionals who are members of CREA.