



965 Mitchell Road Kelowna British Columbia

\$1,000,000

One home of THREE LOT LAND ASSEMBLY - Being SOLD in conjunction with 955 and 975 Mitchell. - Envision your next project on this 3-lot land assembly in Rutland South. This is your opportunity to craft a community that embraces greenery and convenience, making it an ideal choice for discerning buyers. The 3 properties together total .6 acres or just over 26,000 sqft. These properties are located in the Core Neighbourhood in Kelowna's 2040 OCP meaning that a row of townhouses would be a great fit and supported by the City. Home is being sold as part of a 3 lot land assembly. Price is for this home only. (id:6769)

Full bathroom 5' x 10'

Bedroom 10' x 10'

Bedroom 10' x 10'

Living room 10' x 10'

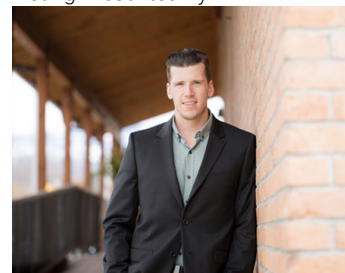
Kitchen 10' x 10'

Bedroom 10' x 10'

Primary Bedroom 10' x 10'

Full bathroom 5' x 10'

Listing Presented By:



Originally Listed by:
Century 21 Assurance Realty Ltd

<http://mattglen.ca/>

RE/MAX Kelowna

RE/MAX Kelowna

100-1553 Harvey Avenue,
Kelowna, BC, V1Y 6G1

Phone: 250-870-6145
dallas@remaxkelowna.com

The property information on this website is derived from the Canadian Real Estate Association's Data Distribution Facility (DDF®). DDF® references real estate listings held by various brokerage firms and franchisees. The accuracy of information is not guaranteed and should be independently verified. The trademarks REALTOR®, REALTORS® and the REALTOR® logo are controlled by The Canadian Real Estate Association (CREA) and identify real estate professionals who are members of CREA. The trademarks MLS®, Multiple Listing Service® and the associated logos are owned by CREA and identify the quality of services provided by real estate professionals who are members of CREA.