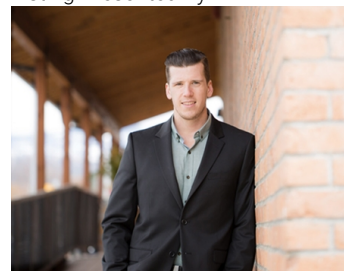


## Pacific Avenue Kelowna British Columbia

\$6,250,000

Three contiguous parcels with a natural creek setting with the Riparian area of Mill Creek. Totaling gross site are of .96 acres (Gross Site Area 37,492 SF (excluding Riparian Setback) OCP - UC2 Zoning - 6 Stories and Base FAR: 1.8 (+.25 bonus and +.3 for purpose-built rental Max FAR 2.05 for market housing, 2.35 for purpose built rental housing. Professional Architectural Preliminary Site Analysis has identified the potential 88 Units building one larger building with a one or two level parkade or two separate buildings with common ingress egress. (id:6769)

Listing Presented By:



Originally Listed by:  
Royal LePage Kelowna

**RE/MAX** Kelowna

**RE/MAX Kelowna**

100-1553 Harvey Avenue ,  
Kelowna, BC, V1Y 6G1

Phone: 250-870-6145  
dallas@remaxkelowna.com

The property information on this website is derived from the Canadian Real Estate Association's Data Distribution Facility (DDF®). DDF® references real estate listings held by various brokerage firms and franchisees. The accuracy of information is not guaranteed and should be independently verified. The trademarks REALTOR®, REALTORS® and the REALTOR® logo are controlled by The Canadian Real Estate Association (CREA) and identify real estate professionals who are members of CREA. The trademarks MLS®, Multiple Listing Service® and the associated logos are owned by CREA and identify the quality of services provided by real estate professionals who are members of CREA.