

TENTATIVE PLAN SHOWING A PROPOSED SUBDIVISION OF A PORTION OF THE SW1/4 SEC.1 TWP.84 RGE.22 W5. MER. PEACE RIVER, ALBERTA BY 494680 ALBERTA LTD. JUNE 2021

TOTAL AREA	17.39± Ha (141.75± Ac)
LOT 1, BLK 1	31.37± Ha (183.7± Ac)
ROAD	1.42± Ha (5.98± Ac)
ROAD WIDENING	0.27± Ha (0.67± Ac)
REMAINDER OF SW-1-84-22-W5M	12.73± Ha (56.14± Ac)

KEY PLAN SCALE 1:4000

NOTES  
1. PLAN IS PRELIMINARY AND SHALL BE CONFIRMED BY ALBERTA LAND SURVEYOR.

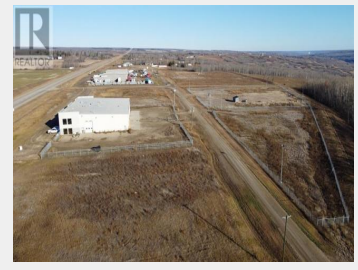
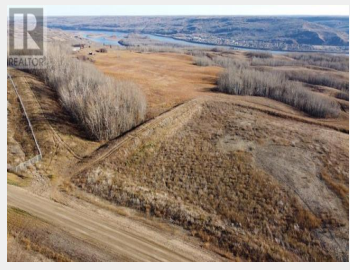
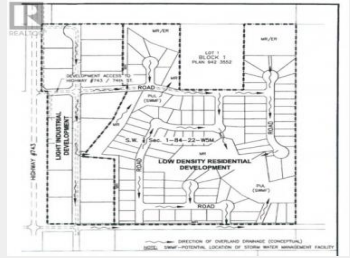
494680 ALBERTA LTD.  
PEACE RIVER, AB.  
PROPOSED SUBDIVISION  
SW 1-84-22-W5M  
TENTATIVE SUBDIVISION PLAN

<b>BORGANCE</b>		4561, 9120 Gateway Blvd., Edmonton, AB T6B 2B6 Phone: (780) 993-8882 E-mail: info@borgance.com/borgance@bpc.ca	
THOMPSON Engineers & Contractors Ltd.		4561, 9120 Gateway Blvd., Edmonton, AB T6B 2B6 Phone: (780) 993-8882 E-mail: info@borgance.com/borgance@bpc.ca	
SCALE:	1:4000		
DESIGNED BY:	USA	JOB NUMBER:	51029DT
DRAWN BY:	USA	CHECKED BY:	TS
DATE:	21-03-24	DRAWING NUMBER:	SK01
LAST EDIT DATE: 21-06-16			

0 0 Peace River Alberta  
\$399,900



NOTICE FOR PUBLIC PROPOSED SUBDIVISION OF A PORTION OF THE SW1/4 SEC.1 TWP.84 RGE.22 W5. MER. PEACE RIVER, ALBERTA BY 494680 ALBERTA LTD. JUNE 2021



ENDLESS OPPORTUNITIES!!!! This 78 Acre Parcel is up for grabs, overlooking the town of Peace River and its beautiful valley! Perfect location to build the home of your dreams! This parcel also has a structure plan to be developed into 85 low-density residential lots! Offer must be pending Developers subdividing of the subject property. (id:6769)

**Dan Singla**  
on behalf of:  
Sutton Group Grande Prairie Professionals



The property information on this website is derived from the Canadian Real Estate Association's Data Distribution Facility (DDF®). DDF® references real estate listings held by various brokerage firms and franchisees. The accuracy of information is not guaranteed and should be independently verified. The trademarks REALTOR®, REALTORS® and the REALTOR® logo are controlled by The Canadian Real Estate Association (CREA) and identify real estate professionals who are members of CREA. The trademarks MLS®, Multiple Listing Service® and the associated logos are owned by CREA and identify the quality of services provided by real estate professionals who are members of CREA.

