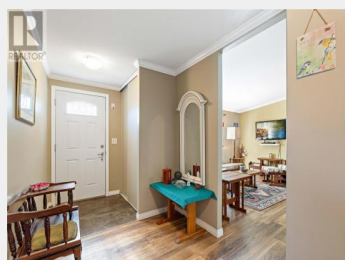


5931 Island Highway 10 Nanaimo British Columbia

\$429,000

- Patio
- Storage
- Ensuite
- Primary Bedroom
- Laundry room
- Dining room
- Living room
- Kitchen
- Bathroom
- Bedroom
- Bedroom
- Entrance



CALL-250-386-8181. Located in the Pleasant Valley Estates this rancher style 3 bed, 2 bath, is remarkably kept. The generous kitchen with dining room & vaulted living room is flooded with light, just right for entertaining or a romantic table for two. You will love the roomy master suite with a patio door to the deck and a full 4-piece ensuite. Designed with privacy in mind the 2 other bedrooms and bath are at the opposite end of the home. A touch of class is evident with the well thought out separate laundry room and crown molding finishing throughout. The full-length deck from the front to the back is protected from weather with retractable awnings and a covered entranceway. Outdoors you have parking for two or more around the back, a lovely private canopied patio and a shaded garden. On top of all this is a 10x10 Cedar storage shed. This 55+ manufactured home park is central to the north end amenities - Woodgrove & Rutherford Malls, Costco, Landmark & Cineplex theatres along with many restaurants. (id:6769)

Dan Singla

on behalf of:
RE/MAX Generation - The Neal Estate Group

