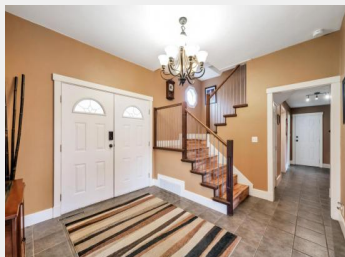


10014 YOUNG Road
Chilliwack British
Columbia

\$1,149,900



!!SUITE+SWIMMING POOL!! You will love this 3700+sqft 2-storey w/bsmt home, as it is truly a paradise for entertaining. 4 large bdrms, 4 bthrms, 2 kitchens & a 15681sqft lot. The original part of the home was built in 1914, & some of the character was preserved throughout the years & renovations to add some extra charm however, the home has all the great qualities of a home built today. When you walk in the grand foyer the tone is set, just a couple steps down lead you to the large sunken living room, exposed wooden accent ceiling w/beams pair nicely w/the cultured stone-wrapped fireplace, double doors lead you to the large patio & pool area. The large formal dining room off the kitchen w/ the original sliding doors from the early 1900's, a 2nd set of double doors lead you to a redone covered deck area, featuring a floor-to-ceiling stone tile wall w/linear fireplace. This home also offers a 1300+sqft suite that could easily be converted into 2 or 3 bdrm. Huge corner lot has subdivision potential! CALL TODAY! * PREC - Personal Real Estate Corporation (id:6769)

Dan Singla

on behalf of:
Pathway Executives Realty Inc.



The property information on this website is derived from the Canadian Real Estate Association's Data Distribution Facility (DDF®). DDF® references real estate listings held by various brokerage firms and franchisees. The accuracy of information is not guaranteed and should be independently verified. The trademarks REALTOR®, REALTORS® and the REALTOR® logo are controlled by The Canadian Real Estate Association (CREA) and identify real estate professionals who are members of CREA. The trademarks MLS®, Multiple Listing Service® and the associated logos are owned by CREA and identify the quality of services provided by real estate professionals who are members of CREA.



SAGE
EXECUTIVE GROUP
REAL ESTATE