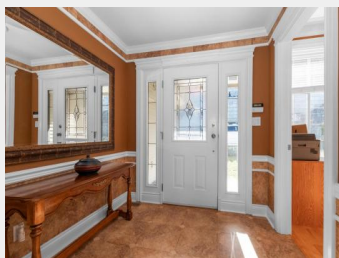


**43995 CHILLIWACK
MOUNTAIN Road 106
Chilliwack British
Columbia**

\$930,000



Immaculate and inviting, this charming two-story home boasts a walkout daylight basement. The stunning maple hardwood staircase and floors flow seamlessly throughout the main and upper levels. The kitchen features elegant granite countertops and stainless steel appliances. Crown moulding and trim work add a touch of sophistication throughout. Relax by the gorgeous river rock fireplace or enjoy the comfort of central air conditioning. This home has a built-in vacuum, and a security system for peace of mind. The private fenced backyard offers a tranquil retreat with views of the surrounding mountains. The finished basement is perfect for entertaining, featuring a spacious rec. room with, a wet bar, two fridges for beverages, and an additional gas fireplace. There is no pet restriction. (id:6769)

Dan Singla

on behalf of:
Century 21 Creekside Realty (Luckakuck)



The property information on this website is derived from the Canadian Real Estate Association's Data Distribution Facility (DDF®). DDF® references real estate listings held by various brokerage firms and franchisees. The accuracy of information is not guaranteed and should be independently verified. The trademarks REALTOR®, REALTORS® and the REALTOR® logo are controlled by The Canadian Real Estate Association (CREA) and identify real estate professionals who are members of CREA. The trademarks MLS®, Multiple Listing Service® and the associated logos are owned by CREA and identify the quality of services provided by real estate professionals who are members of CREA.



SAGE
EXECUTIVE GROUP
REAL ESTATE