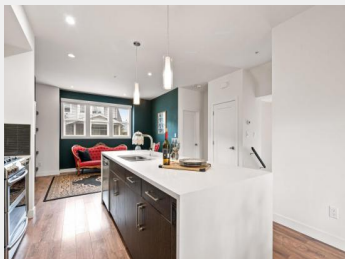
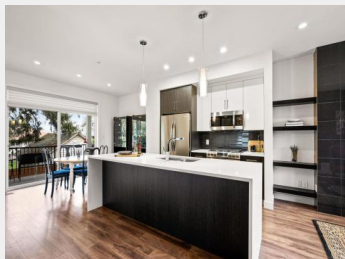


45455 SPADINA Avenue
12 Chilliwack British
Columbia

\$715,000



Experience elegance in this beautiful 3-bedroom plus den, 3-bathroom corner unit townhome! The gourmet kitchen boasts upgraded gas stove, quartz countertops, and built-in shelving in the pantry. Custom features include blinds, closets, and premium built-ins throughout. Stay comfortable year-round with heat pump and central A/C, along with tankless hot water and hot water on demand. Enjoy the convenience of upstairs laundry with a full sink. Outside, a large patio and parking for 4 vehicles (2 covered, 2 open) await. Nestled in a quiet complex with ample street parking, and just steps away from shopping, restaurants, and leisure centers, this home offers the perfect blend of luxury and convenience. Don't miss out "" schedule your viewing today! (id:6769)

Dan Singla

on behalf of:
Stonehaus Realty Corp



The property information on this website is derived from the Canadian Real Estate Association's Data Distribution Facility (DDF®). DDF® references real estate listings held by various brokerage firms and franchisees. The accuracy of information is not guaranteed and should be independently verified. The trademarks REALTOR®, REALTORS® and the REALTOR® logo are controlled by The Canadian Real Estate Association (CREA) and identify real estate professionals who are members of CREA. The trademarks MLS®, Multiple Listing Service® and the associated logos are owned by CREA and identify the quality of services provided by real estate professionals who are members of CREA.



SAGE
EXECUTIVE GROUP
REAL ESTATE