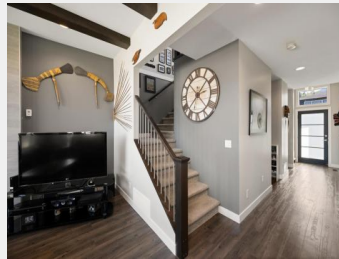


**5665 PROMONTORY
Road 2 Chilliwack British
Columbia**

\$999,900



Discover style & practicality in this beautifully designed home. Centrally located & close to all levels of school, restaurants, shopping & hiking trails! This quality built home is the perfect place to entertain both friends & family either on your covered deck overlooking the mountains or inside its open concept floor plan. The main floor features a gourmet kitchen with quartz counters, island with seating & a walk-in pantry. The living room has large windows that flood the space with natural light & features exposed beams & 10ft ceilings. Upstairs, enjoy a spacious primary bedroom with a full ensuite & 3 additional bedrooms. The unfinished basement has a separate entrance & offers income potential. Enough room to park your RV and still have room for 2 cars in addition to the garage! (id:6769)

Dan Singla

on behalf of:
Team 3000 Realty Ltd.

