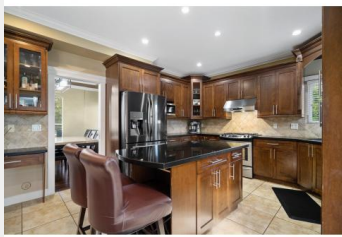
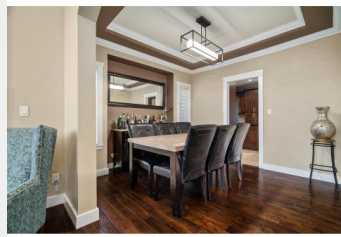


20334 98A Langley British Columbia

\$1,725,000



Welcome to YORKSON GROVE in WALNUT GROVE a beautiful neighbourhood with a magnificent 7 BEDROOM home, accompanied by a legal 2 BEDROOM BASEMENT SUITE. The home is conveniently located minutes away from Highway 1 and Golden Ears Bridge. A well-manicured exterior and inviting curb appeal with a sizeable backyard is ideal for any family. Inside, an open-concept design welcomes you, featuring a beautiful formal living, formal dining area, and a spacious living room with 20 foot ceilings. Natural light flows in the interiors through oversized windows, enhancing the spacious feel. The sizeable master bedroom, adorns a spacious walk-in closet and an en-suite. The home is warmed by 2 FIREPLACES in the winter and cooled by AC during the hot summers months. (id:6769)

Dan Singla

on behalf of:
eXp Realty (Branch)



The property information on this website is derived from the Canadian Real Estate Association's Data Distribution Facility (DDF®). DDF® references real estate listings held by various brokerage firms and franchisees. The accuracy of information is not guaranteed and should be independently verified. The trademarks REALTOR®, REALTORS® and the REALTOR® logo are controlled by The Canadian Real Estate Association (CREA) and identify real estate professionals who are members of CREA. The trademarks MLS®, Multiple Listing Service® and the associated logos are owned by CREA and identify the quality of services provided by real estate professionals who are members of CREA.



SAGE
EXECUTIVE GROUP
REAL ESTATE