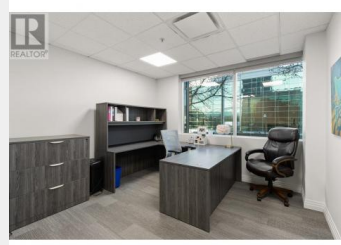
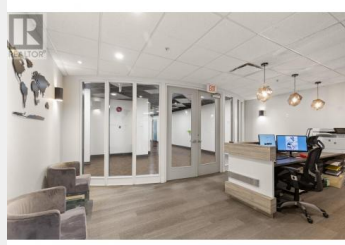




1632 Dickson Avenue 205  
Kelowna British Columbia

\$16



Attention commercial tenants seeking a hassle-free move-in experience! Here's an outstanding sublease opportunity awaiting your business at Landmark 3, situated within the vibrant Landmark District. We're excited to present not one, but two units ready for your occupancy. Unit 205 offers a spacious 2,405 square feet, while there is the option to add Unit 202 which provides a total of 4427 square feet of prime commercial space. Step into a meticulously designed layout featuring four offices, two expansive boardrooms, a welcoming reception area, and a generously sized open space ideal for fostering collaboration with a potential for a bullpen-style setup. Convenience is key with five unreserved parking spaces designated for your team. Plus, rest assured knowing this sublease extends until December 31, 2026, offering stability for your business endeavors. Beyond the office walls, the Landmark District beckons with its bustling array of amenities, including coffee shops, restaurants, and breweries, ensuring your workday transitions seamlessly into after-hours enjoyment. A great bonus is ample visitor parking available throughout the day, accommodating clients and guests couldn't be easier. (id:6769)

**Dan Singla**

on behalf of:  
Royal LePage Kelowna



The property information on this website is derived from the Canadian Real Estate Association's Data Distribution Facility (DDF®). DDF® references real estate listings held by various brokerage firms and franchisees. The accuracy of information is not guaranteed and should be independently verified. The trademarks REALTOR®, REALTORS® and the REALTOR® logo are controlled by The Canadian Real Estate Association (CREA) and identify real estate professionals who are members of CREA. The trademarks MLS®, Multiple Listing Service® and the associated logos are owned by CREA and identify the quality of services provided by real estate professionals who are members of CREA.



**SAGE**  
EXECUTIVE GROUP  
REAL ESTATE