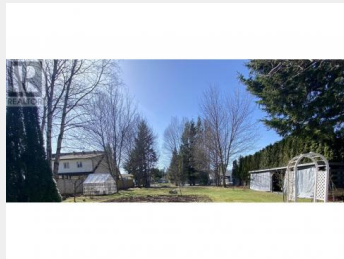
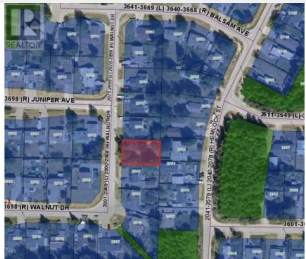




2054 WALNUT Drive Terrace British Columbia

\$130,000



* PREC - Personal Real Estate Corporation. Beautiful building lot in one the areas nicest neighbourhoods. This 8850 SQFT lot has a Western exposure to the from and offers nice mountain views. Soils are excellent for construction in this area, and mandatory building scheme ensures that the neighbourhoods values will remain strong going forward. Located just 5 minutes from the Skeena Valley Golf Course, near to transit routes and less than 10 minutes from downtown Terrace, this lot enjoys the tranquility of being on a road that services only the neighbourhood. (id:6769)

Dan Singla

on behalf of:
Royal LePage Aspire Realty (Terr)

