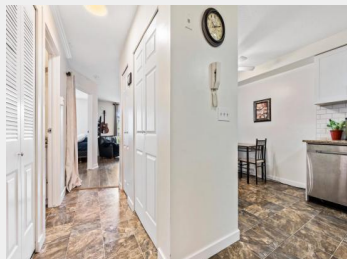


7435 SHAW Avenue 207
Chilliwack British
Columbia

\$379,900



Affordable 2Bed 1Bath well-maintained Condo in highly sought after SARDIS. Prime location within walking distance to shopping, restaurants, schools, transportation, trails, parks and HWY 1. This location can't be beat at this price point. Open floor plan with LAMINATE flooring and south facing windows that let in plenty of natural light. Primary bedroom is spacious w/ laminate flooring and sizeable closet. 2nd bedroom also has laminate flooring. The living room is bright and airy. Enjoy beautiful MTN VIEWS from the balcony. The kitchen has SS appliances, decorative backsplash, and a new dishwasher (2023). IN-SUITE LAUNDRY, STORAGE ROOM, LOW STRATA, FRESH PAINT (2023) AND NEW H/T (2023). FIRST TIME HOME BUYERS this is the perfect condo to break into the market or for INVESTORS. Call Now! (id:6769)

Dan Singla

on behalf of:
RE/MAX Nyda Realty Inc.



The property information on this website is derived from the Canadian Real Estate Association's Data Distribution Facility (DDF®). DDF® references real estate listings held by various brokerage firms and franchisees. The accuracy of information is not guaranteed and should be independently verified. The trademarks REALTOR®, REALTORS® and the REALTOR® logo are controlled by The Canadian Real Estate Association (CREA) and identify real estate professionals who are members of CREA. The trademarks MLS®, Multiple Listing Service® and the associated logos are owned by CREA and identify the quality of services provided by real estate professionals who are members of CREA.



SAGE
EXECUTIVE GROUP
REAL ESTATE