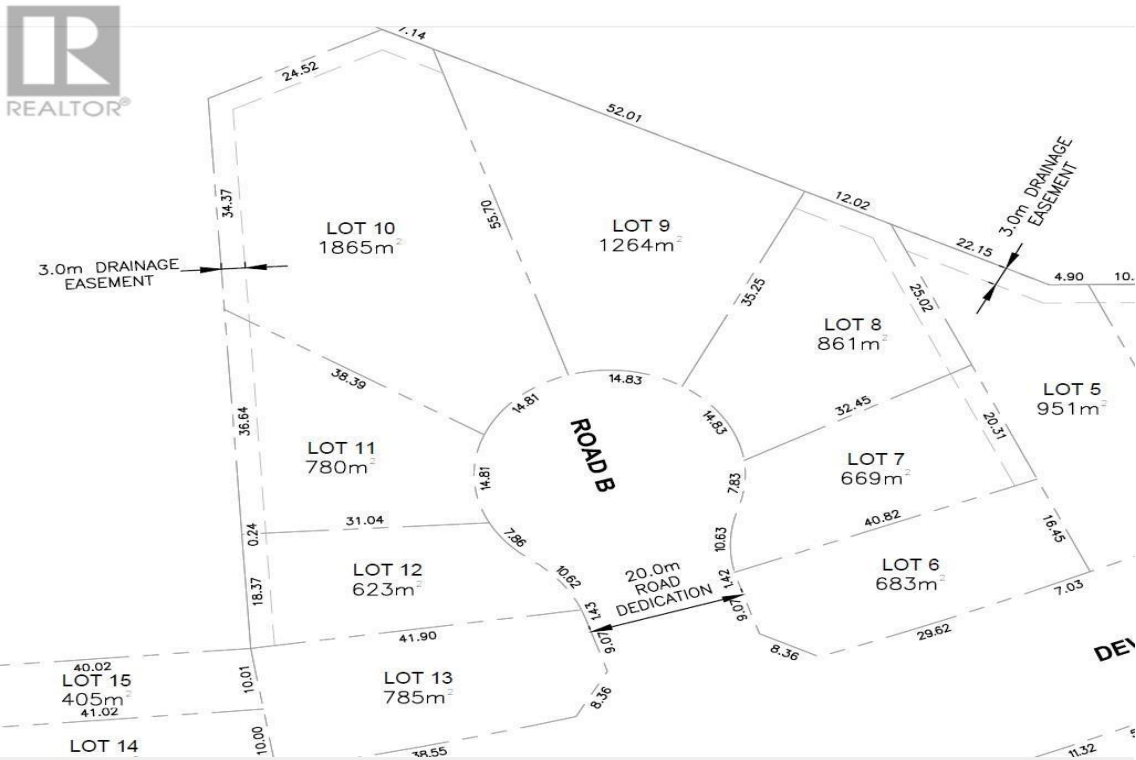




# 2620 PEBBLE Place Prince George British Columbia

\$220,000



Truly one of the nicest subdivisions in Prince George. Close to Edgewood Elementary School and the Nechako River. The central location makes it close to all amenities. (id:6769)

**Dan Singla**  
on behalf of:  
Royal LePage Aspire Realty



The property information on this website is derived from the Canadian Real Estate Association's Data Distribution Facility (DDF®). DDF® references real estate listings held by various brokerage firms and franchisees. The accuracy of information is not guaranteed and should be independently verified. The trademarks REALTOR®, REALTORS® and the REALTOR® logo are controlled by The Canadian Real Estate Association (CREA) and identify real estate professionals who are members of CREA. The trademarks MLS®, Multiple Listing Service® and the associated logos are owned by CREA and identify the quality of services provided by real estate professionals who are members of CREA.

