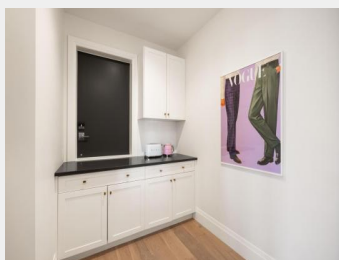


8295 NIXON Road 30
Chilliwack British
Columbia

\$1,595,000



This 2020 custom-built and recently re-imagined designer home, overlooking the Camden at the Falls golf course, Chilliwack Valley, and Mount Cheam, is simply perfect! Boasting over 4,000 sq. ft., 3 bedrooms, and 4 bathrooms with elegant finishes, its wide plank engineered hardwood flooring features a timeless style. The open concept living space boasts a magnificent state-of-the-art kitchen complete with Thermador 48" gas range with double oven and a handy pantry that has a butler's access from the garage for all your groceries. This vibrant executive golf community nestled in Chilliwack is an ideal location for golf enthusiasts, families, and empty nesters alike. Siding onto a greenbelt provides privacy while oversized windows take advantage of the beautiful vistas and ambient light. (id:6769)

Dan Singla

on behalf of:
FaithWilson Christies International Real Estate



The property information on this website is derived from the Canadian Real Estate Association's Data Distribution Facility (DDF®). DDF® references real estate listings held by various brokerage firms and franchisees. The accuracy of information is not guaranteed and should be independently verified. The trademarks REALTOR®, REALTORS® and the REALTOR® logo are controlled by The Canadian Real Estate Association (CREA) and identify real estate professionals who are members of CREA. The trademarks MLS®, Multiple Listing Service® and the associated logos are owned by CREA and identify the quality of services provided by real estate professionals who are members of CREA.



SAGE
EXECUTIVE GROUP
REAL ESTATE