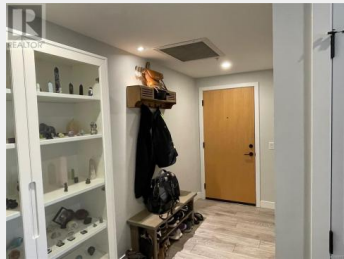




**950 Whirlaway Crescent
412 Langford British
Columbia**

\$585,000

- Balcony
- Bedroom
- Bathroom
- Primary Bedroom
- Kitchen
- Living room
- Entrance



This is a unique top-floor corner suite that comes with a huge deck spanning 460 square feet is perfect for outdoor living and entertaining. The private terrace has a sunny exposure to the south and east. The suite has 764 square feet of bright and contemporary interior living space. Its efficient junior two-bedroom layout features high ceilings, a spacious entry hall, a well-appointed kitchen with a gas range, stylish millwork and quartz countertops, an electric fireplace with a built-in shelving surround, a roomy bathroom with modern finishes, and on-demand hot water. The suite also boasts an economical heat pump system for both heating and cooling. Bedrooms are separated by the open-concept living area, providing great privacy. It includes secure parking, a separate storage locker, a gym, and bike storage. Pets, rentals, and BBQs are permitted. The suite is located just a few minutes from Costco and Millstream Village Shopping Centre. (id:6769)

Dan Singla
on behalf of:
Pemberton Holmes Ltd. (Dun)



The property information on this website is derived from the Canadian Real Estate Association's Data Distribution Facility (DDF®). DDF® references real estate listings held by various brokerage firms and franchisees. The accuracy of information is not guaranteed and should be independently verified. The trademarks REALTOR®, REALTORS® and the REALTOR® logo are controlled by The Canadian Real Estate Association (CREA) and identify real estate professionals who are members of CREA. The trademarks MLS®, Multiple Listing Service® and the associated logos are owned by CREA and identify the quality of services provided by real estate professionals who are members of CREA.

