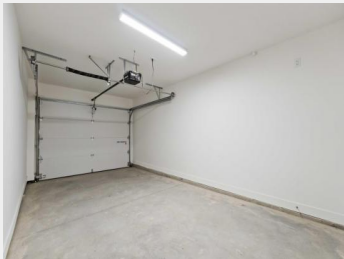
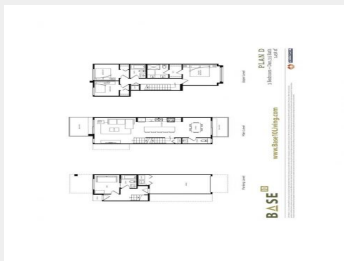




**46150 THOMAS Road 472
Chilliwack British
Columbia**

\$615,900



Scheduled for completion in April 2024, BASE 10 stands as Chilliwack's meticulously planned townhome community at the intersection of Promontory and Thomas. This 3-bedroom + den, 3.5 bathroom home showcases distinctive modern architecture on the exterior and bright, expansive layouts on the interior. Impeccably finished with our designer color scheme, BASE 10 is poised to become your ideal residence. Notable features encompass Hardi-Panel exterior siding, both driveway and garage parking, generous balconies, a complete kitchen appliance and laundry package, contemporary color schemes, a fireplace, air conditioning, a spa-like ensuite, and much more. Conveniently situated near shopping, schools, and recreational amenities! (id:6769)

Dan Singla
on behalf of:
RE/MAX City Realty



The property information on this website is derived from the Canadian Real Estate Association's Data Distribution Facility (DDF®). DDF® references real estate listings held by various brokerage firms and franchisees. The accuracy of information is not guaranteed and should be independently verified. The trademarks REALTOR®, REALTORS® and the REALTOR® logo are controlled by The Canadian Real Estate Association (CREA) and identify real estate professionals who are members of CREA. The trademarks MLS®, Multiple Listing Service® and the associated logos are owned by CREA and identify the quality of services provided by real estate professionals who are members of CREA.

