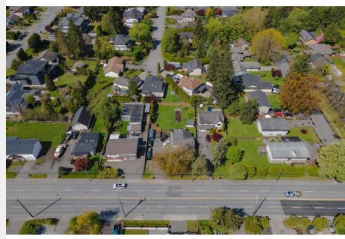


4851 200 Langley British Columbia

\$2,100,000



LAND ASSEMBLY! Possibility for over an acre combined of Ground-Oriented Residential with a permitted Floor Area Ratio (FAR) of 1.2. Allowing Townhomes, rowhomes, and duplex, triplex and fourplex for a number of uses including Multi-Unit Residential, Accessory Commercial, Live/Work. The purpose of this zoning is to provide a range of missing middle housing options adjacent to future frequent transit routes and great park amenities. This is a great holding property as this home has been well maintained and features a potential bonus suite below for extra rental income as well as a HUGE detached shop. (id:6769)

Dan Singla

on behalf of:
Royal LePage - Wolstencroft

