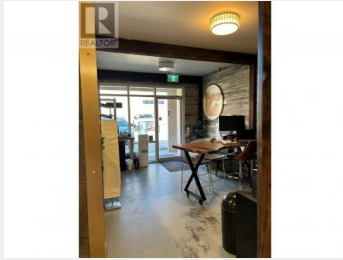




1580 Innovation Drive 5 &
6 Kelowna British
Columbia

\$16



Introducing units 5 & 6 at 1580 Innovation Drive, ideally situated in the heart of Kelowna's Airport Business Park. This exceptional mixed-use industrial space, now available for immediate lease, offers 1,793 SF plus 437 SF of mezzanine space in unit 5 and 1,865 SF plus 570 SF of mezzanine space in unit 6 with the option to combine units for a total of 4,665 SF. These combined units seamlessly transition from a renovated front-end reception area to an extended warehouse, providing a flexible environment for diverse business needs. With a generous 22 FT clear ceiling height, 1 glass grade-level loading door per unit, a two-piece bathroom, and office space in the back, it's an ideal space for a variety of applications. (id:6769)

Dan Singla
on behalf of:
Royal LePage Kelowna



The property information on this website is derived from the Canadian Real Estate Association's Data Distribution Facility (DDF®). DDF® references real estate listings held by various brokerage firms and franchisees. The accuracy of information is not guaranteed and should be independently verified. The trademarks REALTOR®, REALTORS® and the REALTOR® logo are controlled by The Canadian Real Estate Association (CREA) and identify real estate professionals who are members of CREA. The trademarks MLS®, Multiple Listing Service® and the associated logos are owned by CREA and identify the quality of services provided by real estate professionals who are members of CREA.

