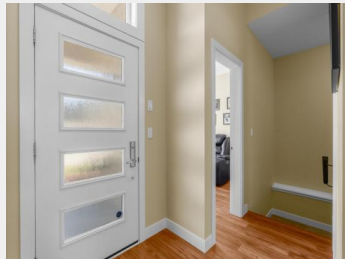
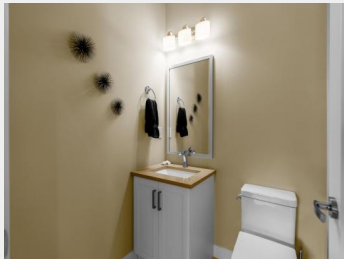


46110 THOMAS Road 51
Chilliwack British
Columbia

\$978,800



If you're seeking a secure and serene retirement community on non-lease/and, your search ends here! This meticulously maintained, well-appointed home feels fresh and inviting. Let's delve into the details: Floor Plan: The bright and open floor plan features the master bedroom on the main level, making it convenient for daily living. Appliances: The home boasts stainless steel appliances and a gas range, ensuring modern convenience. Outdoor Comfort: Imagine relaxing in the summer shade under a beautiful retractable powered awning. Interior Comfort: No need to worry about sweltering heat-the home is equipped with air conditioning. Additionally, this community is conveniently close to lakes, hiking trails, and all amenities. It's the perfect place to call your forever home!Open Sun 1 to 4pm May 5th (id:6769)

Dan Singla
on behalf of:
RE/MAX Sabre Realty Group



The property information on this website is derived from the Canadian Real Estate Association's Data Distribution Facility (DDF®). DDF® references real estate listings held by various brokerage firms and franchisees. The accuracy of information is not guaranteed and should be independently verified. The trademarks REALTOR®, REALTORS® and the REALTOR® logo are controlled by The Canadian Real Estate Association (CREA) and identify real estate professionals who are members of CREA. The trademarks MLS®, Multiple Listing Service® and the associated logos are owned by CREA and identify the quality of services provided by real estate professionals who are members of CREA.




SAGE
EXECUTIVE GROUP
REAL ESTATE