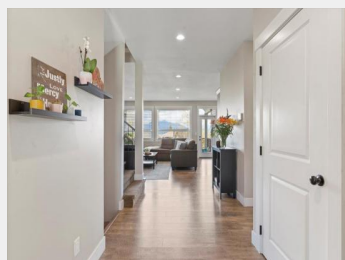


51033 ZANDER Place
Chilliwack British
Columbia

\$1,325,000



UPSIZING THE DREAM. 2 Storey w/walk out basement, 3,728 sq ft living space, 6 bedrms + den, 4 bathrms. Open concept main floor with 9 ft ceilings, living room with fireplace, family sized kitchen with gas range, quartz, soft close, inlay sink, island open to dining area with door to a supersized sundeck with vaulted cover and amazing views + a front porch too! Check the bedrm sizes, so much space for everyone, incl primary with dimmable lighting, walk in, deluxe ensuite. Lower level with fantastic family room (has roughed in plumbing for suite potential); walk out to a covered patio and level fenced backyard. Furnace and AC upgraded to larger quiet units to comfortably service this extra large home. 6,784 sq ft property, excellent location in the Eastern Hillside, don't delay, view today. (id:6769)

Dan Singla

on behalf of:
HomeLife Advantage Realty Ltd



The property information on this website is derived from the Canadian Real Estate Association's Data Distribution Facility (DDF®). DDF® references real estate listings held by various brokerage firms and franchisees. The accuracy of information is not guaranteed and should be independently verified. The trademarks REALTOR®, REALTORS® and the REALTOR® logo are controlled by The Canadian Real Estate Association (CREA) and identify real estate professionals who are members of CREA. The trademarks MLS®, Multiple Listing Service® and the associated logos are owned by CREA and identify the quality of services provided by real estate professionals who are members of CREA.



SAGE
EXECUTIVE GROUP
REAL ESTATE