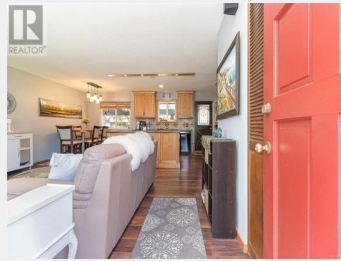




# 551 Ruby Crescent Nanaimo British Columbia

\$670,000

- Patio
- Bathroom
- Primary Bedroom
- Bedroom
- Bedroom
- Kitchen
- Dining room
- Living room
- Entrance



3 bed, 1 bath rancher in Uplands. This stunning home is the perfect blend of comfort, style, and functionality. Inside, discover an inviting open-concept layout with stunning kitchen, fully equipped with new appliances, large island (with USB ports), wood cabinetry and plenty of storage. Gas fireplace, furnace and hot water, will keep you comfortable year-round, while the convenient gas BBQ hookup ensures seamless outdoor entertaining. Outside, is a private oasis adorned with lush landscaping, a tranquil pond, fire pit & the convenience of an irrigation system in both front and back yards. Fully-fenced yard with 2 storage sheds providing ample space for outdoor essentials. Entertain in style on the covered patio, complete with an outside bar. Whether you're hosting a summer barbecue or unwinding after a long day, this outdoor retreat is sure to impress. Single garage has ample storage and built-in cabinets. Located near a bus route, shopping, and all levels of schools, this home offers both tranquility and convenience. (id:6769)

**Dan Singla**  
on behalf of:  
One Percent Realty Ltd



The property information on this website is derived from the Canadian Real Estate Association's Data Distribution Facility (DDF®). DDF® references real estate listings held by various brokerage firms and franchisees. The accuracy of information is not guaranteed and should be independently verified. The trademarks REALTOR®, REALTORS® and the REALTOR® logo are controlled by The Canadian Real Estate Association (CREA) and identify real estate professionals who are members of CREA. The trademarks MLS®, Multiple Listing Service® and the associated logos are owned by CREA and identify the quality of services provided by real estate professionals who are members of CREA.

