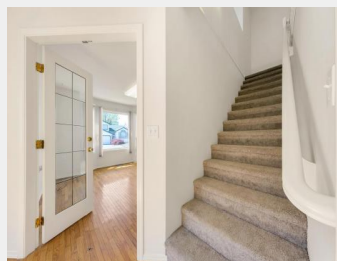


**5952 GLENDALE Drive
Chilliwack British
Columbia**

\$885,000



Perfect family home on large lot in the popular residential neighborhood of Sardis South. Situated on a quite cul-de-sac, and minutes from Vedder River and schools, this three-bedroom two-story has mountain views and a great layout! The welcoming foyer boasts French doors that lead to a good-sized den, a large rec room for the kids to enjoy, and completing the lower floor is a double car garage, huge laundry area and full bath. Upstairs hosts three full bedrooms, a living room, separate dining area, plus a cozy open concept kitchen and family room with gas fireplace. All new carpet, hardwood and fresh paint complete this move in ready property. A must see! Call for viewing. (id:6769)

Dan Singla

on behalf of:
Macdonald Realty

