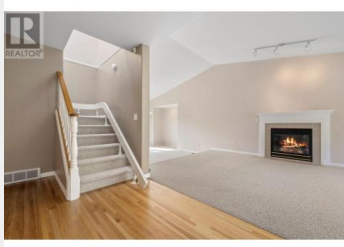




6267 Thompson Drive Peachland British Columbia

\$1,100,000

- 4pc Bathroom
- Bedroom
- Bedroom
- Laundry room
- 4pc Ensuite bath
- Primary Bedroom
- Full bathroom
- Foyer
- Partial bathroom
- Family room
- Dining nook
- Kitchen
- Dining room
- Living room
- Other
- Bedroom
- Kitchen
- Living room



Two storey with walk out basement on a .25 acre lot with jaw dropping panoramic lake, valley & mountain views! Great windows flood the home with light & highlight one of the best views in the Okanagan! A large flat front lot has parking for 8 & all your RV needs! The living room with soaring ceilings & gas fireplace overlook the dining area & back deck through french doors. The kitchen has Corian countertops, s/s appliances & a cosey dining nook with an awe-inspiring view. Off the dining nook is a sunken family room with fireplace & wet bar. Through french doors is a large entertaining-friendly deck with glass railings to enjoy the stunning vistas (natural gas hookups at each end). Upstairs, the large primary bedroom has its own deck, a walk-in closet & spa-like 4-piece en-suite with jetted soaker tub & a glass shower. The top floor is completed by a seating area with skylight & 2 more bedrooms, a full bathroom & laundry room. The walk out basement has a fully self-contained (separate entrance, laundry & extra storage) 1 bedroom plus den & 1 bath suite, with large living room & patio doors to a private patio. Additional features: double garage, RV parking with sani dump & electricity, pre-wired lower patio for hot tub, u/g irrig., b/i. vac, retractable sunshade, fire sprinklers & 200-amp service. Updates include: furnace & A/C, driveway asphalt, fridge (2023), dishwasher (2022), washer (2021), dryer (2018), roof (Appx. 2010). Measurements approx. please verify if important. (id:6769)

Dan Singla

on behalf of:
Royal LePage Kelowna

