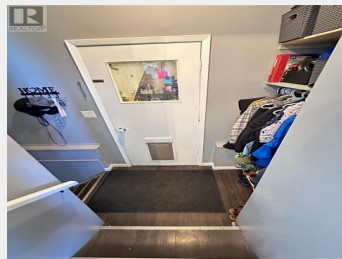




Estevan Saskatchewan

\$264,500

- Dining nook
- Family room
- Bedroom
- 3pc Bathroom
- Laundry room
- Foyer
- Kitchen
- Living room
- Bedroom
- Bedroom
- Bedroom
- 4pc Bathroom



Move-in ready bungalow located on a quiet street in Centennial Park, offering proximity to shopping, parks, SVALC, and Affinity Place. This move in ready home features an inviting open-concept main living space which make it feel larger than it is. The kitchen houses updated appliances, lots of storage, a stylish backsplash and plenty of space for dining. With three bedrooms upstairs and an additional one downstairs, this home provides ample accommodation for your family and or guests. The stylishly updated basement requires no work at all, showcasing a spacious family room, flex space, bedroom, and a 3-piece bath. The attached heated garage adds to the appeal of this property with room for parking and storage. The backyard is definitely one of the most impressive aspects of this property! With large RV parking, spacious patio area, plenty of space for the kids to play and backing on to an open field this yard has it all and more. Numerous significant updates include shingles, furnace, sewer line, windows, front deck, and more making this home a great option! Book your showing and don't miss out! (id:6769)

Dan Singla
 on behalf of:
 Coldwell Banker Choice Real Estate



The property information on this website is derived from the Canadian Real Estate Association's Data Distribution Facility (DDF®). DDF® references real estate listings held by various brokerage firms and franchisees. The accuracy of information is not guaranteed and should be independently verified. The trademarks REALTOR®, REALTORS® and the REALTOR® logo are controlled by The Canadian Real Estate Association (CREA) and identify real estate professionals who are members of CREA. The trademarks MLS®, Multiple Listing Service® and the associated logos are owned by CREA and identify the quality of services provided by real estate professionals who are members of CREA.

