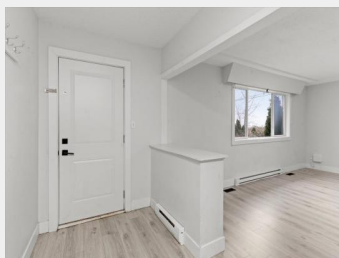


9122 HIEBERT Street
Chilliwack British
Columbia

\$699,900



FANTASTIC OPPORTUNITY for a First Time Buyer, Downsizing Buyer or Investor! AFFORDABLE 4 bedroom rancher with basement on a HUGE, FLAT LOT. Recent updates include flooring, appliances, and roof, ensuring low maintenance costs. The fully finished basement is easily suitable with separate entrance, offering additional investment income potential. Perfectly situated in a central location near District 1881 and the ever growing downtown core, a short walk from Walden Park, CSS, Chilliwack Middle School & FG Leary Fine Arts Elementary. This property promises CONVENIENCE AND VALUE. Don't miss out on this PRIME REAL ESTATE OPPORTUNITY! LOTS of potential especially with city new ZONING changes in JUNE!! * PREC - Personal Real Estate Corporation (id:6769)

Dan Singla

on behalf of:
HomeLife Advantage Realty Ltd (Vedder)



The property information on this website is derived from the Canadian Real Estate Association's Data Distribution Facility (DDF®). DDF® references real estate listings held by various brokerage firms and franchisees. The accuracy of information is not guaranteed and should be independently verified. The trademarks REALTOR®, REALTORS® and the REALTOR® logo are controlled by The Canadian Real Estate Association (CREA) and identify real estate professionals who are members of CREA. The trademarks MLS®, Multiple Listing Service® and the associated logos are owned by CREA and identify the quality of services provided by real estate professionals who are members of CREA.



SAGE
EXECUTIVE GROUP
REAL ESTATE