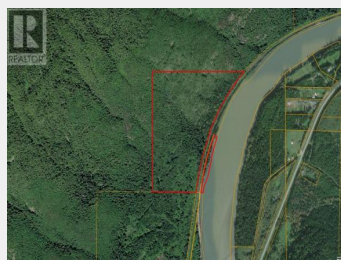
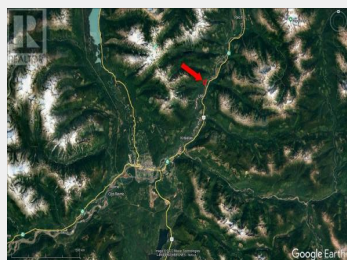
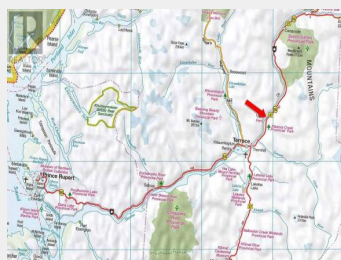
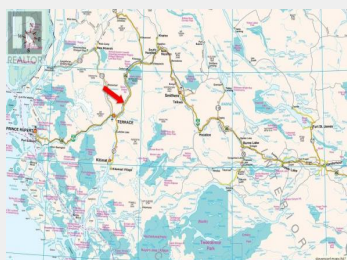


DL 922 USK Terrace British Columbia

\$259,000



Private Riverfront Acreage with Timber- Usk, BC. 92.35 acres 2 km north of of Usk, BC. 25 km north of Terrace, BC. Challenging access! Only legal access being by water on the Skeena River or walking 2 km along the railroad tracks. 1200 feet of waterfront on the world-renowned Skeena River. Rural residential zoning. Pockets of mature timber including approx. 2,000 m3 of Cedar. Spectacularly beautiful piece of BCs backcountry. Build a backcountry hideaway with a portable sawmill and the ambition to create private paradise of your own. Has the timber, climate and water needed for off grid living and a self-sufficient lifestyle. (id:6769)

Dan Singla

on behalf of:
Landquest Realty Corporation

