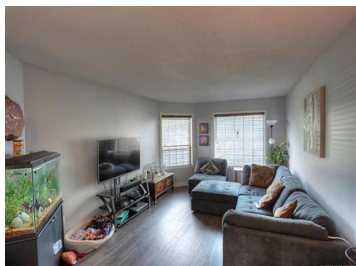




338 Phipps Crescent Kelowna

RN - Rutland North

\$459,900



TEAM HAMER-JACKSON FROM RE/MAX Kelowna presents this great Revenue Producing CASH FLOWING half duplex complete with separated 1 bedroom inlaw suite! Almost 2000 sqft over 3 levels and situated on large .18/acre with big fully fenced yard on quiet cul-de-sac. Main level has spacious kitchen with sliding glass doors to nice deck, large living room and 2pc bathroom. Upstairs has 3 bedrooms and full ensuite and 2nd full bathroom. The lower level has self-contained inlaw suite with separate entrance. Great package for investor or someone that wants a mortgage helper. 4 bedrooms and 3.5 bathrooms in total, Single car garage, central air, laminate and tile flooring, lots of parking and in a great neighborhood close to schools, transit, parks and the Rutland YMCA plus amenities. Great tenants in place Generating \$2985/month.

Rick Hamer-Jackson

RE/MAX Kelowna

Phone: 250-862-1622

teamhamer@shaw.ca



RE/MAX Kelowna
100-1553 Harvey Avenue
Kelowna, BC,
Canada