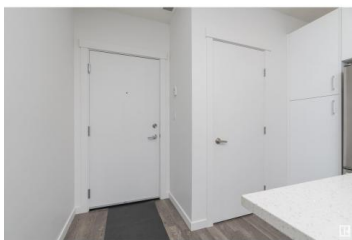


\$319,900



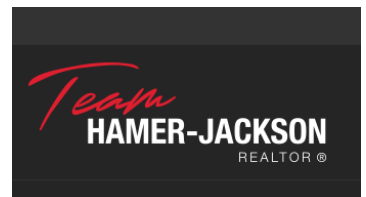
Awesome condo in the beautiful neighbourhood of Belgravia. True walkable neighbourhood with U of A, LRT, coffee shops, restaurants, Whyte Ave, Rivervalley and so much more just a short walk away. This condo is modern & sleek with vinyl plank floors, white cabinets, quartz counters, energy star appliances, 2 bedrooms, 4 piece bathroom, insuite laundry, covered west facing deck, heated underground parking and the building offers an amazing roof top deck- perfect spot to entertain & enjoy long summer days & the beautiful views. The unique CONCRETE building has geothermal & solar panels. Whether you are a young professional, student or looking to downsize and retire this condo and location are for you!! Assumable mortgage opportunity at 1.96% until Dec 1, 2026. Some photos have been virtually staged. (id:6769)



Teresa J. Secret

RE/MAX Elite

Phone: (780) 982-6858



RE/MAX Kelowna
100-1553 Harvey Avenue
Kelowna, BC,
Canada