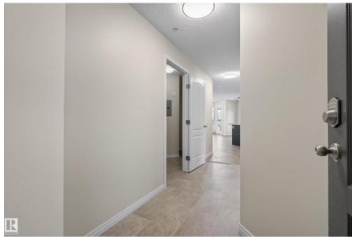




\$219,888



Welcome to Park Place South -- Space, Light, and Location. This corner-unit condo in Terwillegar brings a rare sense of room to breathe. Windows on two sides fill the space with natural light, giving every corner an open, airy feel that's hard to find in condo living. Inside, you'll find two well-sized bedrooms and two full bathrooms -- a smart layout for professionals, couples, or first-time buyers ready to plant roots. Freshly painted throughout, the unit feels crisp and move-in ready. Step out onto the expansive private balcony, perfect for morning coffee, evening wine, or simply enjoying the view. Two parking stalls come included -- a genuine convenience that sets this unit apart and adds real value whether living in it or renting it out. This is an ideal opportunity for investors seeking strong rental appeal, or for anyone starting out and wanting a place that already has it all figured out. Terwillegar offers walkable amenities, top-rated schools, and quick access to the Anthony Henday.

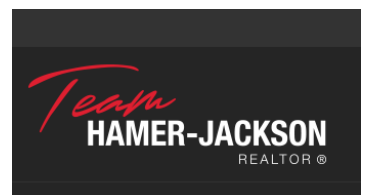
(id:6769)



Bernie Chu

RE/MAX Elite

Phone: (780) 908-6138



RE/MAX Kelowna
100-1553 Harvey Avenue
Kelowna, BC,
Canada