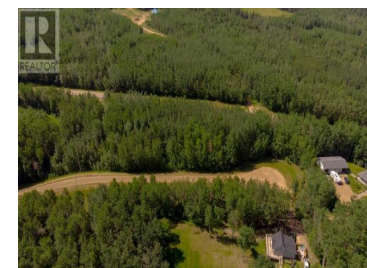
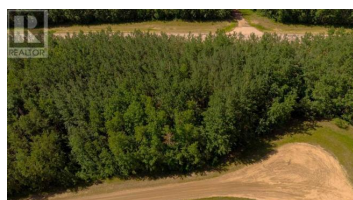
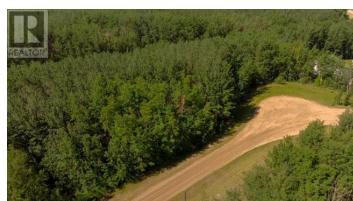
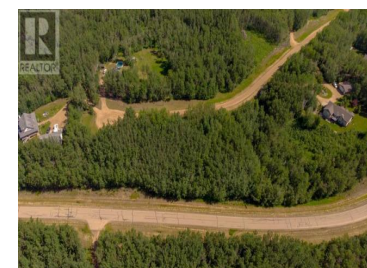


0 Drive Athabasca Alberta

\$69,900

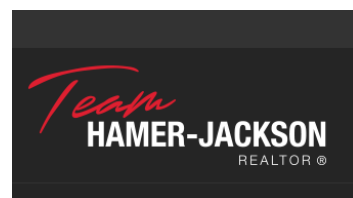


Custom build your home on this 2.79-acre lot in Century Estates, a desirable and established subdivision located less than 10 minutes from Athabasca. Surrounded by mature trees, this parcel offers privacy, space, and a peaceful setting to bring your vision to life. Whether you're ready to build now or looking for a long-term investment, this lot offers flexibility with no time restrictions to build. However, building restrictions do apply to ensure a consistent standard of quality within this part of the subdivision, making it ideal for those planning a custom home. (id:6769)

SHAHIRA BURY

ROYAL LEPAGE COUNTY REALTY

Phone: (780) 675-0800



RE/MAX Kelowna
100-1553 Harvey Avenue
Kelowna, BC,
Canada