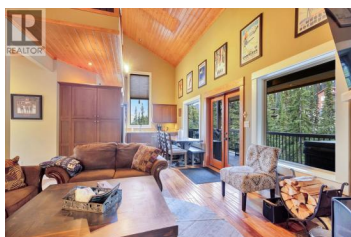




1211 APEX MOUNTAIN Road 1 Penticton British Columbia

Penticton Apex

\$775,000



SKI IN SKI OUT! Welcome to 1211 Apex Mountain Rd, an exquisite turn key 4 bed, 4 bath half duplex offering just under 1,800 sq ft of refined mountain living. Every detail has been crafted for comfort and style--from the rich hardwood floors and soaring vaulted ceilings to the dramatic stone fireplace that anchors the living room. The kitchen showcases stainless steel appliances, abundant storage, and a picture window framing breathtaking mountain views. Entertain with ease on the expansive covered deck, complete with a BBQ area and a private 8-person hot tub overlooking the forest and ski run--your own secluded retreat. The primary with ensuite provides convenience and serenity, while the upper loft and 2 bedrooms and full bathroom offers additional space for guests. A self-contained spacious and open concept one-bedroom suite adds versatility and rental opportunity. Designed with skiers in mind, the oversized mudroom, powder room, ski lockers, and parking for 4 vehicles ensure effortless living. Outside, enjoy true ski-in/ski-out access on the Strayhorse trail, your own private firepit, and unmatched privacy with no chance of anyone building beside or behind. This is more than a cabin--it's an exclusive mountain sanctuary. Located at Apex Mountain Resort, where you'll enjoy year-round adventure including skiing, snowboarding, skating, tubing, snowshoeing, and so much more. B...

Cam Hicklin

Vantage West Realty Inc.

Phone: (250) 801-3839



RE/MAX Kelowna
 100-1553 Harvey Avenue
 Kelowna, BC,
 Canada

