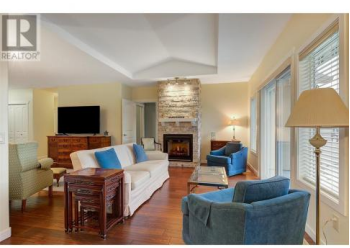




218 Glen Park Drive 1 Kelowna British Columbia

North Glenmore

\$884,900



4-Bed, 3-Full Bath, Almost 3,000 Sq Ft Walk-Out Rancher-Style Townhome in the Sought-After Elios Community! Located across from Matera Glen Park with a playground and near Brandt's Creek Linear Park's 4.3-km scenic trail, this home offers an unbeatable location close to restaurants, coffee shops, parks, schools, and more! This immaculate home features a Double Garage with Epoxy Flooring, 2 Patios, 2 Bedrooms on the Main, and a Full Walk-Out Basement with ample storage and recreation space. The main level boasts a functional and elegant floor plan, highlighted by a gas fireplace, hardwood flooring, and stylish light fixtures. Sliding glass doors lead to a large balcony, perfect for indoor-outdoor entertaining. The updated kitchen includes quartz countertops, stainless steel appliances, ample cabinetry, and a seating bar. The Primary Suite offers a walk-in closet and a beautifully updated ensuite with a soaking tub, glass shower, and quartz countertops. A second bedroom, full guest bathroom, and a well-appointed laundry room with a sink, cupboards, hanging space, and closets complete the main floor. The lower level features a family room w/fireplace, full wet bar w/fridge, wine cellar, two bedrooms, media room with soundproofing, and a full bathroom. The garage racking system provides additional storage. Outside, the enclosed backyard and covered patio enhance the home's appeal...



RE/MAX Kelowna
 100-1553 Harvey Avenue
 Kelowna, BC,
 Canada

Sam Paquette

Royal LePage Kelowna Paquette Realty

Phone: (250) 899-5593

<http://royallepagekelownapr.ca/>

