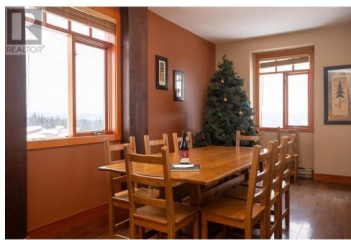




310 Whitehorse Lane 1 Big White British Columbia

Big White

\$949,800



Welcome to the Blacksmith Lodge at Big White - This stunning ski-in/ski-out corner unit townhome offers three spacious levels with luxurious amenities such as heated floors, multiple fireplaces and steam shower! Being the end unit, it has amazing views in 3 directions, 2 balconies offering a great place to watch the weekly Big White firework display - or relax in the hot tub after a fun day on the slopes! The main floor includes the kitchen with granite counters, granite backsplash, and a massive double pantry for all your storage needs, while the large living and dining space provide plenty of room for entertaining. Upstairs you'll find the convenient stacked front-loading laundry and a lockable linen closet, as well as the twin primary bedrooms, each with their own private ensuite. Downstairs, the rec room is an excellent space for unwinding after a day on the mountain. Another bedroom furnished with bunk beds and a day bed is perfect for accommodating extra guests. Another full bathroom and additional locking storage complete this level. This home comfortably sleeps 9 and offers plenty of natural light. A heated one-car garage is included and the home is also equipped with a 150a electrical panel, offering the potential for an EV charger. Whether you're looking to hit the slopes or simply relax in style, this home is the perfect mountain getaway! (id:6769)

Colin Krieg

RE/MAX Kelowna

Phone: (250) 870-8600

<http://www.wolfhomes.com/>



RE/MAX Kelowna
100-1553 Harvey Avenue
Kelowna, BC,
Canada

