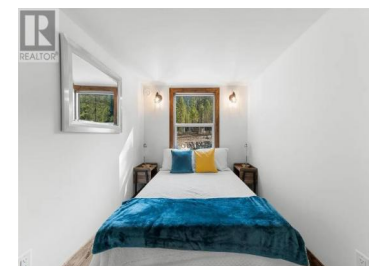




5533 33 Highway 1 Beaverdell British Columbia

Beaverdell/Carmi

\$249,000

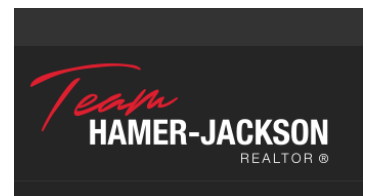


Affordable riverfront cabin. Built in 2022 and sold furnished. Leave the city behind. Fish the Kettle River and hunt in the mountains. Tons of wildlife. Barbecue, go hiking, get some ice cream at the local store. No hauling the big RV over the mountains, you can just drive and enjoy! No noise except the chirping and scurrying of the local wildlife. Generous lot size, you have enough space to invite friends to join you. Certified home with loft and finished basement on 0.33 acres of riverfront property directly on the Kettle River 3 kms south of Beaverdell, 30 minutes from Big White turnoff. (id:6769)

Sam Hodson

Landquest Realty Corporation

Phone: (604) 809-2616



RE/MAX Kelowna
100-1553 Harvey Avenue
Kelowna, BC,
Canada