

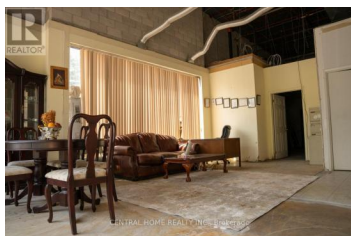


# 95 East Beaver Creek Road 1 Richmond Hill Beaver Creek Business Park Ontario

Beaver Creek Business Park

## \$698,000

CENTRAL HOME REALTY INC., Brokerage

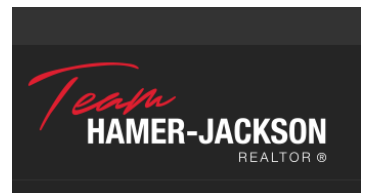


Prime commercial condo unit in the heart of Richmond Hill's highly sought-after Beaver Creek Business Park. Featuring impressive 17-foot clear ceiling height, this versatile commercial space offers excellent flexibility for a wide range of retail, office, showroom, professional, service, and commercial uses (buyer to verify permitted uses). Approx. 1,033 sq.ft. with excellent exposure and convenient access to Highways 404, 407, and Leslie Street. Vacant possession available, making it ideal for both owner-users and investors. Low monthly condo fees, ample surface parking, and a well-maintained commercial complex surrounded by established businesses and amenities. A rare opportunity to own commercial real estate in one of the GTA's most desirable business locations. (id:6769)

**FARSHAD SHAKIBI**

CENTRAL HOME REALTY INC.

Phone: (416) 500-5888



RE/MAX Kelowna  
100-1553 Harvey Avenue  
Kelowna, BC,  
Canada